

\$277,921 - 1314, 604 East Lake Boulevard Ne, Airdrie

MLS® #A2183944

\$277,921

2 Bedroom, 2.00 Bathroom, 809 sqft
Residential on 0.02 Acres

East Lake Industrial, Airdrie, Alberta

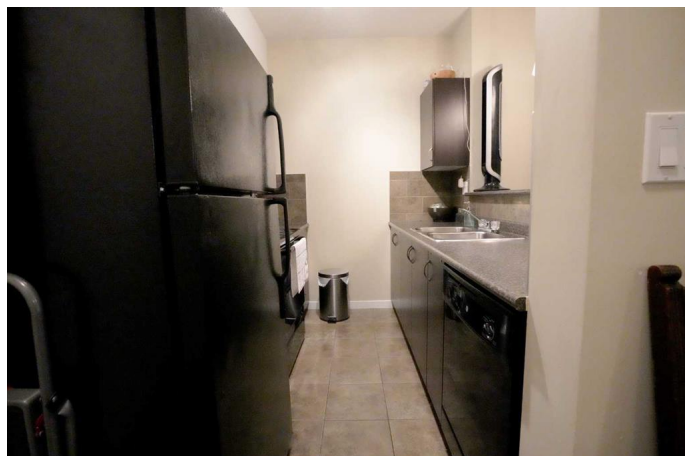
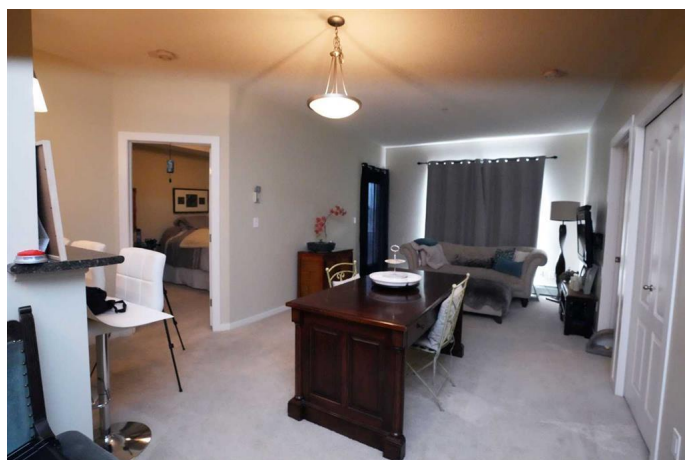
The edge is conveniently located close to bus routes, shopping, hotels, walking paths & the Genesis Center...This unit is over 850 sq ft. This unit has a two-bedroom den and two washrooms a very functional kitchen with all the necessities including a sit-up eating bar! There is a bright & airy living room with a West facing balcony for those warm thereâ€™s a heated, TITLED UNDERGROUND PARKING STALL! this lovely West facing unit could be your new home, just in time to enjoy everything this area has to offer... So book your appointment to see this beauty before it's gone!!

Built in 2008

Essential Information

MLS® #	A2183944
Price	\$277,921
Bedrooms	2
Bathrooms	2.00
Full Baths	2
Square Footage	809
Acres	0.02
Year Built	2008
Type	Residential
Sub-Type	Apartment
Style	Apartment
Status	Active

Community Information



Address	1314, 604 East Lake Boulevard Ne
Subdivision	East Lake Industrial
City	Airdrie
County	Airdrie
Province	Alberta
Postal Code	T4A 2K9

Amenities

Amenities	None
Parking Spaces	1
Parking	Titled, Underground

Interior

Interior Features	Elevator
Appliances	Dishwasher, Dryer, Refrigerator, Washer, Range Hood
Heating	Hot Water
Cooling	None
# of Stories	4

Exterior

Exterior Features	None
Construction	Wood Frame

Additional Information

Date Listed	December 18th, 2024
Days on Market	85
Zoning	DC-29

Listing Details

Listing Office	Century 21 Bravo Realty
----------------	-------------------------

Data is supplied by Pillar 9â„¢ MLSÂ® System. Pillar 9â„¢ is the owner of the copyright in its MLSÂ® System. Data is deemed reliable but is not guaranteed accurate by Pillar 9â„¢. The trademarks MLSÂ®, Multiple Listing ServiceÂ® and the associated logos are owned by The Canadian Real Estate Association (CREA) and identify the quality of services provided by real estate professionals who are members of CREA. Used under license.