

# \$975,000 - 3725 Richmond Road Sw, Calgary

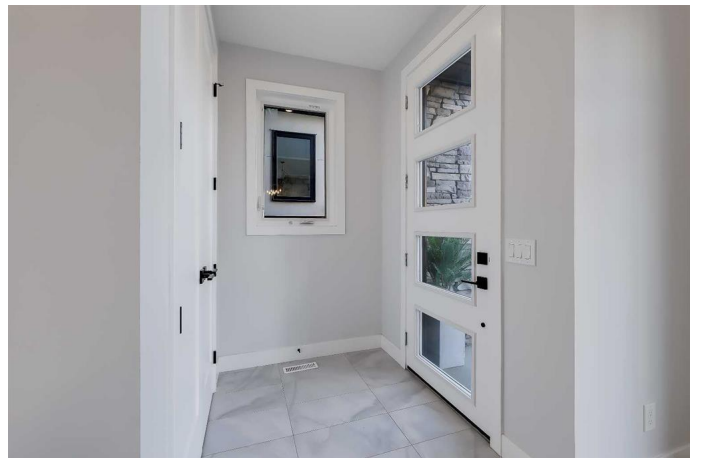
MLS® #A2191545

**\$975,000**

4 Bedroom, 4.00 Bathroom, 1,893 sqft  
Residential on 0.07 Acres

Rutland Park, Calgary, Alberta

Experience elevated living in THIS NEWLY CONSTRUCTED FARMHOUSE-STYLE DUPLEX, located in the sought-after community of RUTLAND PARK! This 4-bedroom, 3.5-bath home is designed for those who appreciate luxury and detail in every corner. Step inside to find a dramatic powder room with a bold feature wall and a contemporary black vessel sink, setting the tone for the home's stylish finishes. The open-concept main floor features a state-of-the-art kitchen equipped with high-end stainless steel appliances, an expansive island with a waterfall quartz countertop, and unique floating wood shelves that add warmth to the sleek design. The living room, complete with a full-height marble-style tile fireplace and custom built-ins, is an inviting space for cozy gatherings and everyday comfort. The upper level is a private retreat, highlighted by a spacious primary suite with vaulted ceilings, a custom-organized walk-in closet, and a spa-like ensuite. Enjoy a freestanding soaking tub, floor-to-ceiling designer tile, a glass-enclosed shower with rain showerhead, and dual sinks, creating a luxurious escape within your home. The second floor also includes two additional bedrooms, a 4-piece bathroom with designer fixtures, and a laundry room for ultimate convenience. The fully developed basement extends the home's living space, featuring a large rec room complete with a built-in wet bar, making it ideal for entertaining or movie nights. An additional



bedroom and full bath provide privacy and flexibility for guests or a home office. Outdoors, the private patio and fenced yard offer a tranquil space for relaxation or dining in the summer. Additional features of this stunning home include hardwood flooring throughout, 9-ft ceilings, rough-ins for AC and security cameras, and an EV-ready garage. Nestled in Rutland Park, this home is just moments away from top schools, lush parks, Mount Royal University, trendy dining, shopping, and fitness amenities. Enjoy easy access to downtown Calgary and major roadways, perfectly balancing urban convenience with neighbourhood charm. Book your private tour today to experience this exceptional property!

Built in 2024

### Essential Information

MLS® #	A2191545
Price	\$975,000
Bedrooms	4
Bathrooms	4.00
Full Baths	3
Half Baths	1
Square Footage	1,893
Acres	0.07
Year Built	2024
Type	Residential
Sub-Type	Semi Detached
Style	2 Storey, Side by Side
Status	Active

### Community Information

Address	3725 Richmond Road Sw
Subdivision	Rutland Park
City	Calgary
County	Calgary

Province Alberta  
Postal Code T3E 4P1

### Amenities

Parking Spaces 2  
Parking Double Garage Detached  
# of Garages 2

### Interior

Interior Features Built-in Features, Chandelier, Closet Organizers, Double Vanity, Kitchen Island, Open Floorplan, Quartz Counters, Recessed Lighting, Vaulted Ceiling(s), Wet Bar  
Appliances Bar Fridge, Built-In Oven, Dishwasher, Dryer, Garage Control(s), Gas Cooktop, Microwave, Range Hood, Washer  
Heating Forced Air  
Cooling Rough-In  
Fireplace Yes  
# of Fireplaces 1  
Fireplaces Gas  
Has Basement Yes  
Basement Finished, Full

### Exterior

Exterior Features BBQ gas line, Private Yard  
Lot Description Back Yard, Low Maintenance Landscape, Rectangular Lot  
Roof Asphalt Shingle  
Construction Concrete, Stucco, Wood Frame  
Foundation Poured Concrete

### Additional Information

Date Listed January 31st, 2025  
Days on Market 57  
Zoning R-C2

### Listing Details

Listing Office RE/MAX House of Real Estate

Data is supplied by Pillar 9â„¸ MLSÂ® System. Pillar 9â„¸ is the owner of the copyright in its MLSÂ® System. Data is deemed reliable but is not guaranteed accurate by Pillar 9â„¸. The trademarks MLSÂ®, Multiple Listing ServiceÂ® and the associated logos are owned by The Canadian Real Estate Association (CREA) and identify the quality of services provided by real estate professionals who are members of CREA. Used under license.