

# \$675,000 - 503 Lawthorn Way Se, Airdrie

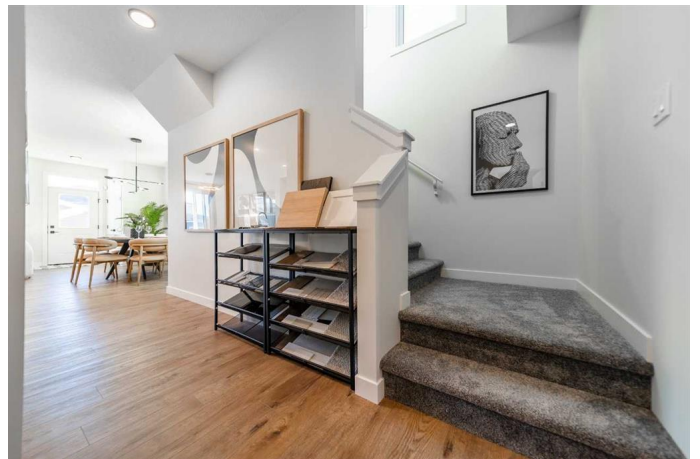
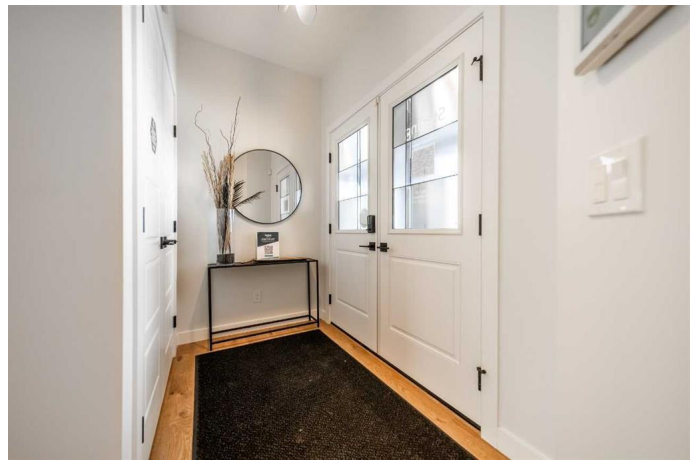
MLS® #A2207151

## \$675,000

4 Bedroom, 3.00 Bathroom, 1,880 sqft  
Residential on 0.07 Acres

Lanark, Airdrie, Alberta

Introducing the Jade â€” a stunning laned home with incredible upgrades throughout! This spacious home features a main floor bedroom and full bath. The chef-inspired kitchen boasts stainless steel appliances, a chimney hood fan, and a spice kitchen with a gas range. Quartz countertops with undermount sinks flow throughout, paired with durable LVP on the main floor and tile in all bathrooms. The great room is highlighted by an electric fireplace with floor-to-ceiling tile, adding elegance to the space. Upstairs, the vaulted ceiling in the bonus room with a skylight brings in abundant natural light. The luxurious 5-piece ensuite includes dual sinks, a standalone tub, a shower with tiled walls, and a large window. A walk-in closet in the primary bedroom and a bank of drawers in both upper floor bathrooms provide extra storage. With additional windows and thoughtful design, the Jade is the perfect blend of luxury and function! Photos are a representative.



Built in 2025

## Essential Information

|            |           |
|------------|-----------|
| MLS® #     | A2207151  |
| Price      | \$675,000 |
| Bedrooms   | 4         |
| Bathrooms  | 3.00      |
| Full Baths | 3         |

|                |             |
|----------------|-------------|
| Square Footage | 1,880       |
| Acres          | 0.07        |
| Year Built     | 2025        |
| Type           | Residential |
| Sub-Type       | Detached    |
| Style          | 2 Storey    |
| Status         | Active      |

### **Community Information**

|             |                     |
|-------------|---------------------|
| Address     | 503 Lawthorn Way Se |
| Subdivision | Lanark              |
| City        | Airdrie             |
| County      | Airdrie             |
| Province    | Alberta             |
| Postal Code | T4A3N9              |

### **Amenities**

|                |             |
|----------------|-------------|
| Amenities      | None        |
| Parking Spaces | 4           |
| Parking        | Parking Pad |

### **Interior**

|                   |   |
|-------------------|---|
| Interior Features | Double Vanity, Kitchen Island, Open Floorplan, Pantry, Separate Entrance, Smart Home, Vaulted Ceiling(s), Walk-In Closet(s), Tankless Hot Water |
| Appliances        | Dishwasher, Electric Range, Microwave, Range Hood, Refrigerator, Tankless Water Heater  |
| Heating           | Forced Air  |
| Cooling           | None  |
| Fireplace         | Yes   |
| # of Fireplaces   | 1   |
| Fireplaces        | Electric  |
| Has Basement      | Yes   |
| Basement          | Full, Unfinished  |

### **Exterior**

|                   |                 |
|-------------------|-----------------|
| Exterior Features | None            |
| Lot Description   | Back Lane       |
| Roof              | Asphalt Shingle |

|              |                 |
|--------------|-----------------|
| Construction | Concrete        |
| Foundation   | Poured Concrete |

### **Additional Information**

|                |                  |
|----------------|------------------|
| Date Listed    | March 31st, 2025 |
| Days on Market | 4                |
| Zoning         | R2               |
| HOA Fees       | 130              |
| HOA Fees Freq. | ANN              |

### **Listing Details**

|                |                    |
|----------------|--------------------|
| Listing Office | Bode Platform Inc. |
|----------------|--------------------|

Data is supplied by Pillar 9â,,ç MLSÂ® System. Pillar 9â,,ç is the owner of the copyright in its MLSÂ® System. Data is deemed reliable but is not guaranteed accurate by Pillar 9â,,ç. The trademarks MLSÂ®, Multiple Listing ServiceÂ® and the associated logos are owned by The Canadian Real Estate Association (CREA) and identify the quality of services provided by real estate professionals who are members of CREA. Used under license.